

**Dekalb County
2002 County Commission Districts
and Voting Precincts**

- County Commission District
- Voting Precinct
- Roads**
- Interstate
- Major
- Local
- Other
- Other Census Block Boundaries**
- Railroad
- Powerline, Pipeline
- Ridgeline, Fenceline
- Nonvisible Feature
- Water
- Rivers/Lakes
- City, Town
- County
- 1 County Commission District Number
- Name Voting Precinct Name

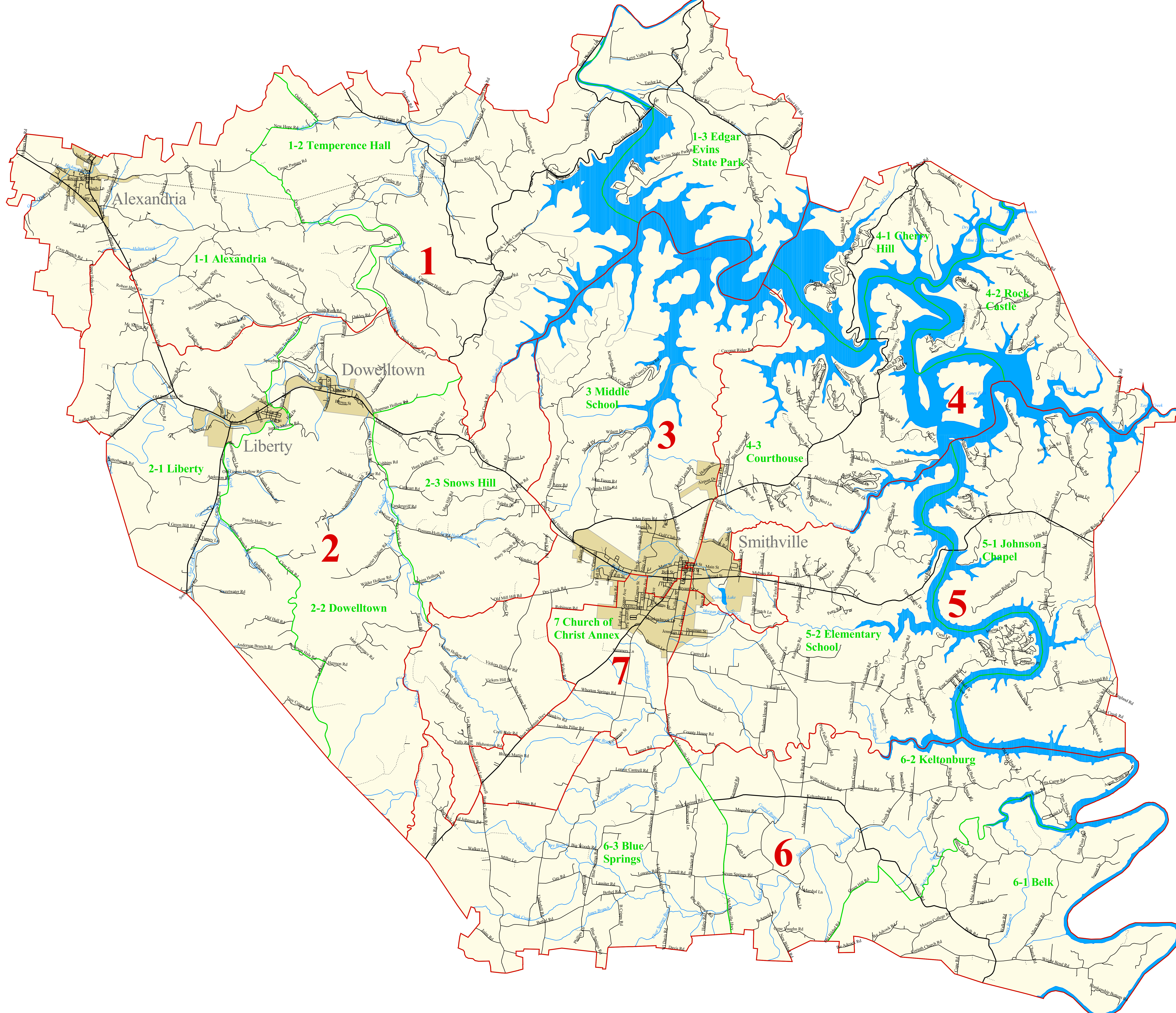
2000 TOTAL POPULATION = 17,423

2000 Population by District

| Ccd | Totalpop | Numcoms | Optpop | Dev | Pct_dev | Blpop | Pct_bipop |
|-----|----------|---------|--------|------|---------|-------|-----------|
| 1 | 2397 | 2 | 2489 | -92 | -3.7 | 64 | 2.7 |
| 2 | 2384 | 2 | 2489 | -105 | -4.2 | 37 | 1.6 |
| 3 | 2539 | 2 | 2489 | 50 | 2.0 | 38 | 1.5 |
| 4 | 2510 | 2 | 2489 | 21 | 0.8 | 54 | 2.2 |
| 5 | 2591 | 2 | 2489 | 102 | 4.1 | 20 | 0.8 |
| 6 | 2516 | 2 | 2489 | 27 | 1.1 | 1 | 0.0 |
| 7 | 2486 | 2 | 2489 | -3 | -0.1 | 36 | 1.4 |

2000 Population by Precinct

| Vtd | Name | Totalpop | Whpop | Blpop | Totalpop18 | Blpop18 | Ccd |
|------|----------------------------|----------|-------|-------|------------|---------|-----|
| 2272 | 1-1 Alexandria | 1697 | 1594 | 63 | 1256 | 49 | 1 |
| 2276 | 1-2 Temperence Hall | 567 | 551 | 1 | 454 | 1 | 1 |
| 2280 | 1-3 Edgar Evins State Park | 133 | 132 | 0 | 96 | 0 | 1 |
| 2284 | 2-1 Liberty | 828 | 811 | 11 | 632 | 6 | 2 |
| 2288 | 2-2 Dowelltown | 655 | 628 | 10 | 489 | 9 | 2 |
| 2289 | 2-3 Snows Hill | 901 | 868 | 16 | 665 | 11 | 2 |
| 2292 | 3 Middle School | 2539 | 2442 | 38 | 2010 | 28 | 3 |
| 2300 | 4-1 Cherry Hill | 203 | 201 | 0 | 168 | 0 | 4 |
| 2304 | 4-2 Rock Castle | 309 | 309 | 0 | 250 | 0 | 4 |
| 2308 | 4-3 Courthouse | 1998 | 1880 | 54 | 1559 | 46 | 4 |
| 2312 | 5-1 Johnson Chapel | 524 | 517 | 0 | 426 | 0 | 5 |
| 2316 | 5-2 Elementary School | 2067 | 1961 | 20 | 1578 | 19 | 5 |
| 2320 | 6-1 Belk | 496 | 489 | 0 | 393 | 0 | 6 |
| 2324 | 6-2 Keltontburg | 960 | 949 | 0 | 734 | 0 | 6 |
| 2328 | 6-3 Blue Springs | 1060 | 985 | 1 | 779 | 1 | 6 |
| 2332 | 7 Church of Christ Annex | 2486 | 2336 | 36 | 1884 | 26 | 7 |



STATE OF TENNESSEE
 COMPTROLLER OF THE TREASURY
 OFFICE OF LOCAL GOVERNMENT
 James K. Polk State Office Building
 505 Deaderick Street, Suite 1700
 Nashville, Tennessee 37243-0277
 Phone: (615) 401-7773



This map was printed by the Office of Local Government, a Division of the Office of the Comptroller of the Treasury of the State of Tennessee. This map was generated using digital data obtained from the US Census Bureau.

